



Warranty

WPI (World Precision Instruments, Inc.) warrants to the original purchaser that this equipment, including its components and parts, shall be free from defects in material and workmanship for a period of 30 days from the date of receipt. WPI's obligation under this warranty shall be limited to repair or replacement, at WPI's option, of the equipment or defective components or parts upon receipt thereof f.o.b. WPI, Sarasota, Florida U.S.A. Return of a repaired instrument shall be f.o.b. Sarasota.

The above warranty is contingent upon normal usage and does not cover products which have been modified without WPI's approval or which have been subjected to unusual physical or electrical stress or on which the original identification marks have been removed or altered. The above warranty will not apply if adjustment, repair or parts replacement is required because of accident, neglect, misuse, failure of electric power, air conditioning, humidity control, or causes other than normal and ordinary usage.

To the extent that any of its equipment is furnished by a manufacturer other than WPI, the foregoing warranty shall be applicable only to the extent of the warranty furnished by such other manufacturer. This warranty will not apply to appearance terms, such as knobs, handles, dials or the like.

WPI makes no warranty of any kind, express or implied or statutory, including without limitation any warranties of merchantability and/or fitness for a particular purpose. WPI shall not be liable for any damages, whether direct, indirect, special or consequential arising from a failure of this product to operate in the manner desired by the user. WPI shall not be liable for any damage to data or property that may be caused directly or indirectly by use of this product.

Claims and Returns

• Inspect all shipments upon receipt. Missing cartons or obvious damage to cartons should be noted on the delivery receipt before signing. Concealed loss or damage should be reported at once to the carrier and an inspection requested. All claims for shortage or damage must be made within 10 days after receipt of shipment. Claims for lost shipments must be made within 30 days of invoice or other notification of shipment.

Please save damaged or pilfered cartons until claim settles. In some instances, photographic documentation may be required. Some items are time sensitive; WPI assumes no extended warranty or any liability for use beyond the date specified on the container.

• WPI cannot be held responsible for items damaged in shipment en route to us. Please enclose merchandise in its original shipping container to avoid damage from handling. We recommend that you insure merchandise when shipping. The customer is responsible for paying shipping expenses including adequate insurance on all items returned.

• Do not return any goods to WPI without obtaining prior approval and instructions (RMA#) from our returns department. Goods returned unauthorized or by collect freight may be refused. The RMA# must be clearly displayed on the outside of the box, or the package will not be accepted. Please contact the RMA department for a request form.

• Goods returned for repair must be reasonably clean and free of hazardous materials.

• A handling fee is charged for goods returned for exchange or credit. This fee may add up to 25% of the sale price depending on the condition of the item. Goods ordered in error are also subject to the handling fee.

• Equipment which was built as a special order cannot be returned.

• Always refer to the RMA# when contacting WPI to obtain a status of your returned item.

• For any other issues regarding a claim or return, please contact the RMA department

Warning: This equipment is not designed or intended for use on humans.

World Precision Instruments, Inc.

USA: International Trade Center, 175 Sarasota Center Boulevard, Sarasota FL 34240-9258 USA

Tel: 941-371-1003 • Fax: 941-377-5428 • E-mail: info@wpiinc.com • Internet: <http://www.wpiinc.com>

Germany: Zossener Str. 55, 10961 Berlin, Germany • Tel: 030-6188845 • Fax: 030-6188670 • E-mail: wpide@wpi-europe.com

UK: 1 Hunting Gate, Hitchin, Hertfordshire SG4 0TJ • Tel: 44 (0) 1462 424700 • Fax: 44(0) 1462 424701 • E-mail: wpiuk@wpi-europe.com

China & Hong Kong: WPI Shanghai Trading Co., Ltd. • Tel: +86 688 85517 • E-mail: ChinaSales@china.wpiinc.com

INSTRUCTION MANUAL

Serial No. _____

041515



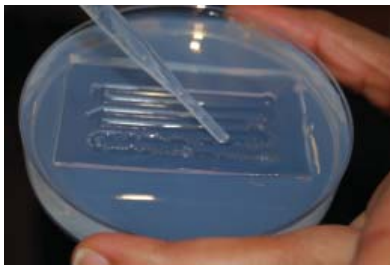
Z-MOLDS Microinjection and Transplantation Molds (4 per kit) are specifically designed for zebrafish research. The molds are turned up-side down and placed in liquid agarose gel and are easily removed once it has solidified. The embryos may be pipetted into the grooves made by the mold in the agarose. The width and design of the molds enable the embryos to self-align.

Using the Molds

1. Dissolve 3% agarose in water and heat until the solution boils.
2. Carefully pour the molten agarose into your petri dishes. The solution will be hot, so take necessary precautions to avoid injury.
3. Rinse the Z-MOLDS with cold water.
4. Place your molds with the ridged side down in the molten agarose.



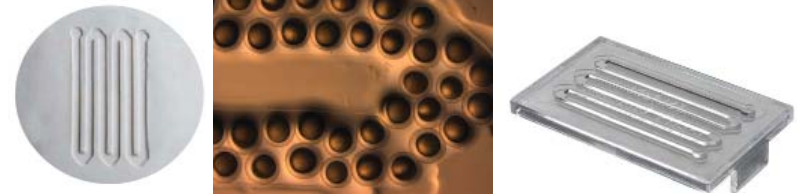
5. Allow the agarose to solidify. For a speedier setup time, store the agarose in a freezer at 4°C.
6. Once the agarose has solidified, bend the agarose plate to loosen the mold. Then, use the handles on the top side of the mold to gently remove it from the agarose. The agarose plates are ready for use.



Applications for Each Mold

Proteomics and Large Screening

This mold is designed for injecting many embryos-up to 1000. The grooves made by the mold in the agarose gel enable the embryos to self-align.



Xenograft and Larval Injection

This mold is designed for larval injections. The sloped ridges make perfect angles in the agarose gel, which then makes it easier to do microinjections in the larvae.



Transplantation

This mold is designed for increasing the speed of doing microinjections. Simply turn the petri dish as you are injecting.



Standard Microinjection

This mold is designed for blastomere transplantation.

